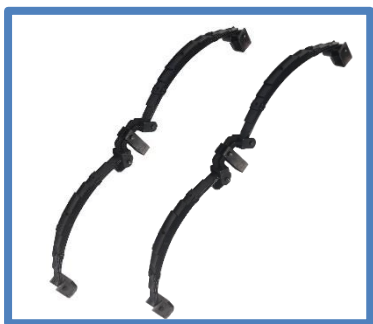
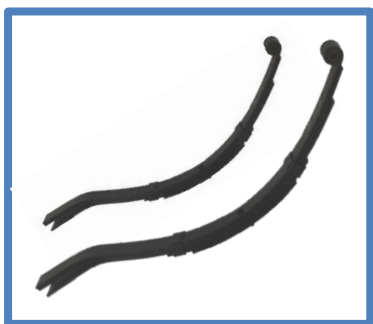


SPRINGS & SPARE PARTS



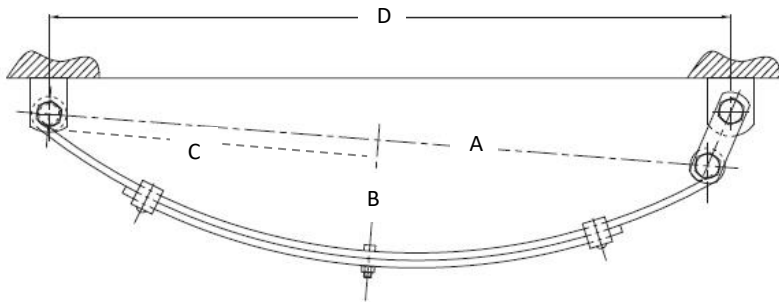
- EYE TO EYE SPRINGS
- OUTBACK SPRINGS
- PARABOLIC SPRINGS
- SLIPPER SPRING
- TANDEM ROCKER SPRINGS
- TANDEM ROCKER ROLLER SPRINGS
- SPRINGS SPARE PARTS



136 Port Wakefield Road, CAVAN SA 5094

Ph. 08 8262 7170 Fax. 08 8262 6123

www.satrailer.com.au

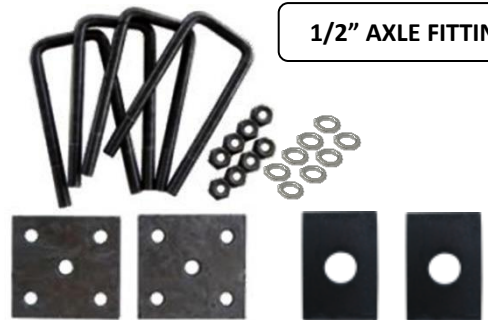


HANGER KIT



SPRINGS

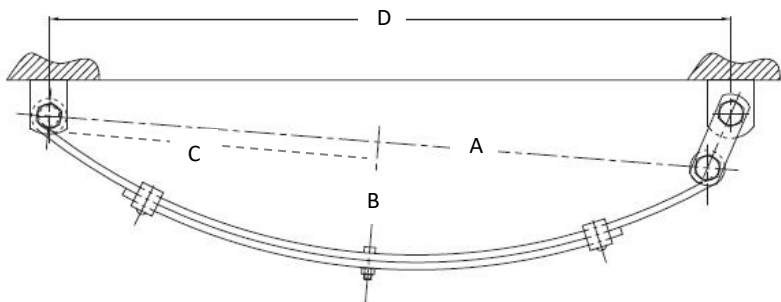
1/2" AXLE FITTINGS



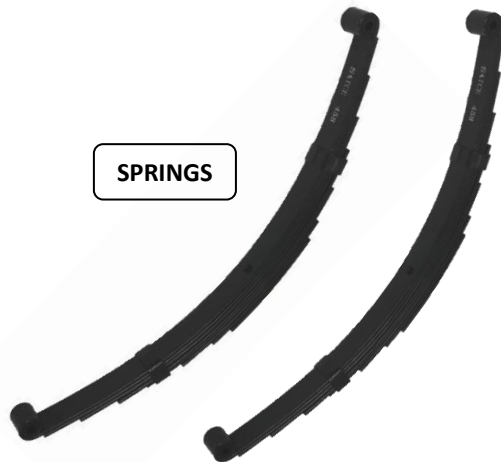
45MM x 8MM EYE to EYE SPRING SETS

PART NO.	DESCRIPTION	CARRYING CAPACITY	FINISH	A	B	C	D
SE456S	SET AK. 6L x 45mm x 8mm EYE to EYE SPRINGS	1500KG	BLACK	711mm	120mm	355mm	735mm
SE458S	SET AK. 8L x 45mm x 8mm EYE to EYE SPRINGS	1900KG	BLACK	711mm	120mm	355mm	735mm

PLEASE NOTE: SET OF SPRINGS INC. SPRINGS, HANGER KIT & 1/2" AXLE FITTINGS



HANGER KIT



SPRINGS

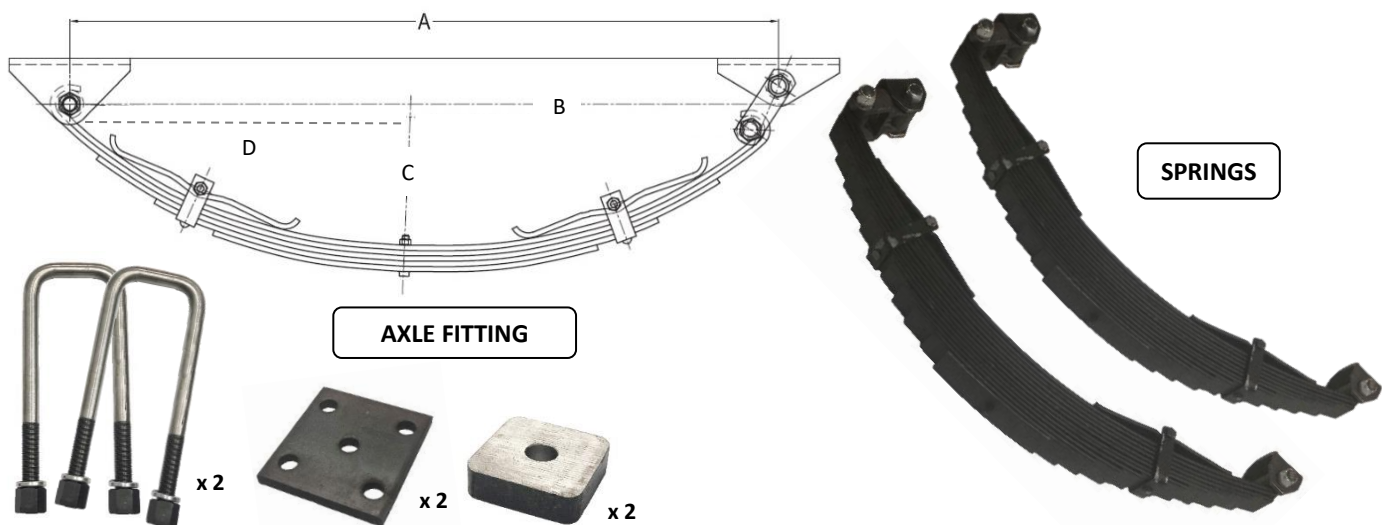


1/2" AXLE FITTINGS

45MM EYE TO EYE SPRING SETS

PART NO.	DESCRIPTION	CARRYING CAPACITY	FINISH	A	B	C	D
SASE456S	SET SAT 6L x 45mm EYE to EYE SPRINGS	750KG	BLACK	716mm	145mm	367mm	722mm
SASE458S	SET SAT 8L x 45mm EYE to EYE SPRINGS	950KG					
SASE4510S	SET SAT 10L x 45mm EYE to EYE SPRINGS	1270KG					

PLEASE NOTE: SET OF SPRINGS INC. SPRINGS, HANGER KIT & 1/2" AXLE FITTINGS

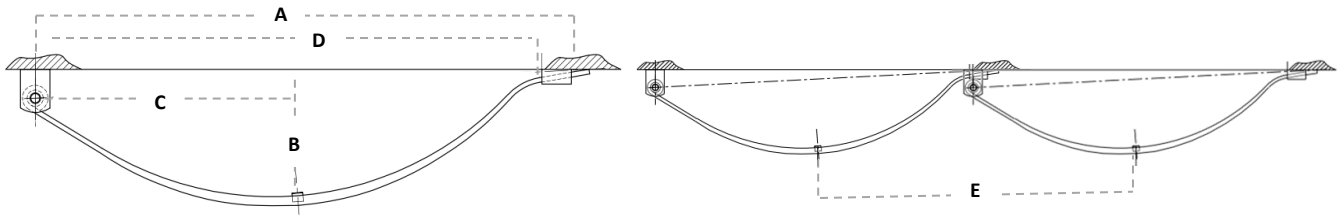


AXLE FITTING

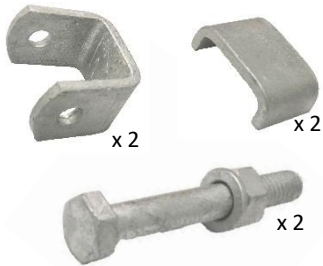
SPRINGS

60MM x 8MM EYE TO EYE SPRING SETS

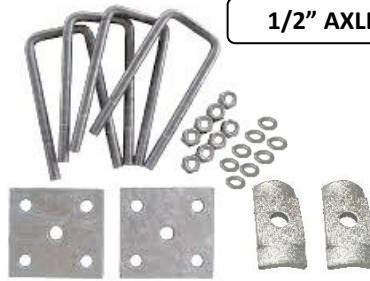
PART NO.	DESCRIPTION	CARRYING CAPACITY	FINISH	A(MM)	B(MM)	C(MM)	D(MM)
SM6013EES	SET MT. 13L x 60mm x 8mm EYE TO EYE SPRING	3000KG	BLACK	900	470	130	465



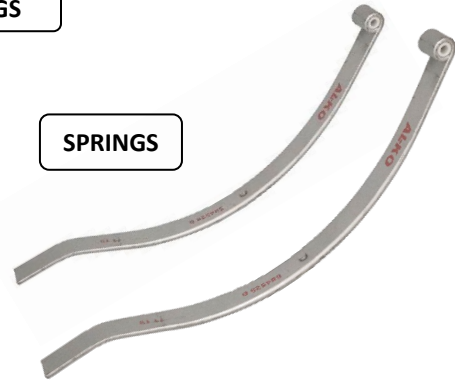
HANGER KIT



1/2" AXLE FITTINGS



SPRINGS



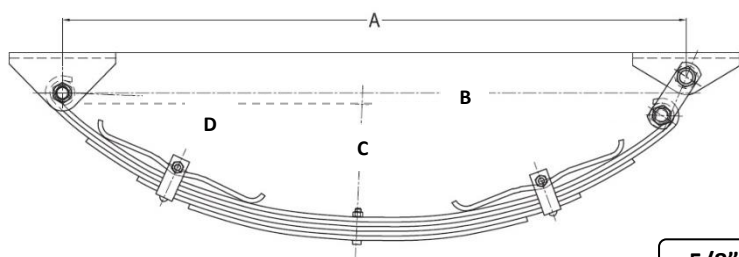
45MM DACROMET PARABOLIC SPRING SETS

PART NO.	DESCRIPTION	CARRYING CAPACITY	SPRING BUSH DIMENSIONS	A(mm)	B(mm)	C(mm)	D(mm)	E(mm)
SPBS600G	SET AK. 45mm x 13mm PARABOLIC SPRING	600KG	1/2" x 7/8" x 45mm	755	150	350	690	710
SPBS1000G	SET AK. 45mm x 15mm PARABOLIC SPRING	1000KG						
SPBS1400G	SET AK. 45mm x 18mm PARABOLIC SPRING	1400KG						

PLEASE NOTE: SET OF SPRINGS INC. SPRINGS, HANGER KIT & 1/2" AXLE FITTINGS

45MM DACROMET PARABOLIC SPRING ONLY

PART NO.	DESCRIPTION	CARRYING CAPACITY	SPRING BUSH DIMENSIONS	A(mm)	B(mm)	C(mm)	D(mm)	E mm)
SPB600G	AK. 45mm x 13mm PARABOLIC SPRING ONLY	300KG	1/2" x 7/8" x 45mm	755	150	350	690	710
SPB1000G	AK. 45mm x 15mm PARABOLIC SPRING ONLY	500KG						
SPB1400G	AK. 45mm x 18mm PARABOLIC SPRING ONLY	700KG						



HANGER KIT

5/8" AXLE FITTINGS

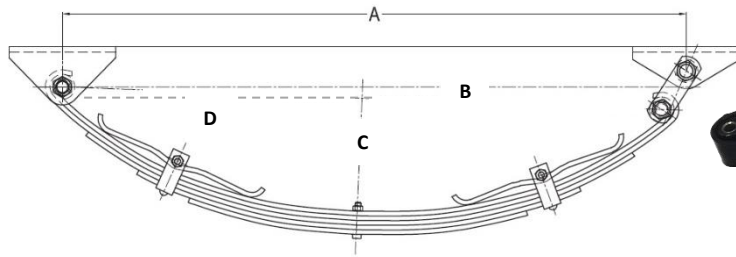
SPRINGS



60MM BLACK OUTBACK SPRING SETS

PART NO.	DESCRIPTION	CARRYING CAPACITY	SINGLE AXLE SET UP DIMENSION "A" (NO LOAD)	B(mm)	C(mm)	D(mm)
SOB5S	SET AK. 5L x 60mm x 7mm EYE TO EYE OUTBACK SPRING	1150KG	865/875mm	841mm	158mm	420mm
SOB6S	SET AK. 6L x 60mm x 7mm EYE TO EYE OUTBACK SPRING	1350KG	865/875mm	841mm	158mm	420mm
SOB7S	SET AK. 7L x 60mm x 7mm EYE TO EYE OUTBACK SPRING	1550KG	865/875mm	841mm	158mm	420mm
SOB8S	SET AK. 8L x 60mm x 7mm EYE TO EYE OUTBACK SPRING	1750KG	865/875mm	841mm	158mm	420mm
SOB9S	SET AK. 9L x 60mm x 7mm EYE TO EYE OUTBACK SPRING	2000KG	865/875mm	841mm	158mm	420mm
SOB10S	SET AK. 10L x 60mm x 7mm EYE TO EYE OUTBACK SPRING	2500KG	865/875mm	841mm	158mm	420mm

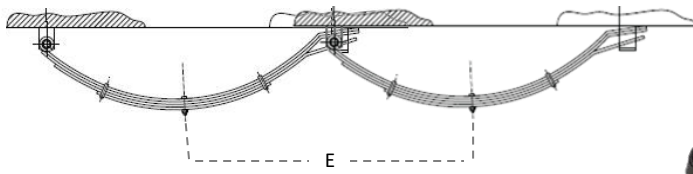
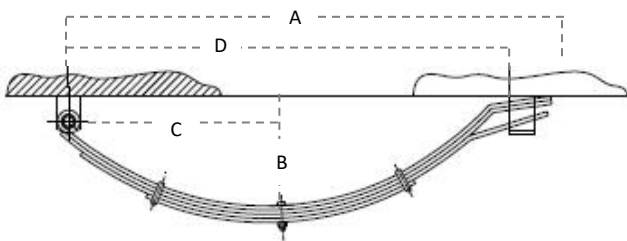
PLEASE NOTE: SET OF SPRINGS INC. SPRINGS, HANGER KIT & 5/8" AXLE FITTINGS



60MM BLACK OUTBACK SINGLE SPRING c/w HANGER KIT

PART NO.	DESCRIPTION	CARRYING CAPACITY	SINGLE AXLE SET UP DIMENSION "A" (NO LOAD)	B(mm)	C(mm)	D(mm)
SOB5	AK. 5L x 60mm x 7mm EYE TO EYE OUTBACK SPRING c/w HANGER KIT	575KG	865/875mm	841mm	158mm	420mm
SOB6	AK. 6L x 60mm x 7mm EYE TO EYE OUTBACK SPRING c/w HANGER KIT	675KG	865/875mm	841mm	158mm	420mm
SOB7	AK. 7L x 60mm x 7mm EYE TO EYE OUTBACK SPRING c/w HANGER KIT	775KG	865/875mm	841mm	158mm	420mm
SOB8	AK. 8L x 60mm x 7mm EYE TO EYE OUTBACK SPRING c/w HANGER KIT	875KG	865/875mm	841mm	158mm	420mm
SOB9	AK. 9L x 60mm x 7mm EYE TO EYE OUTBACK SPRING c/w HANGER KIT	1000KG	865/875mm	841mm	158mm	420mm
SOB10	AK. 10L x 60mm x 7mm EYE TO EYE OUTBACK SPRING c/w HANGER KIT	1250KG	865/875mm	841mm	158mm	420mm

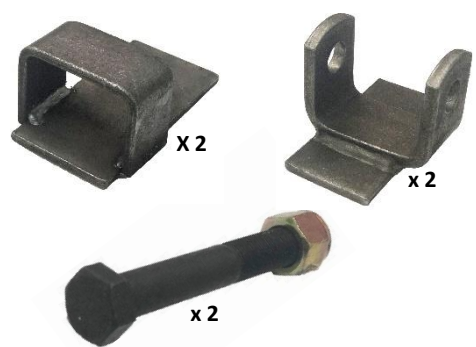
PLEASE NOTE: SINGLE SPRING c/w HANGER KIT (NO AXLE FITTINGS)



HANGER KIT

1/2" AXLE FITTINGS

SPRINGS



60MM x 6MM BLACK SLIPPER SPRING SETS

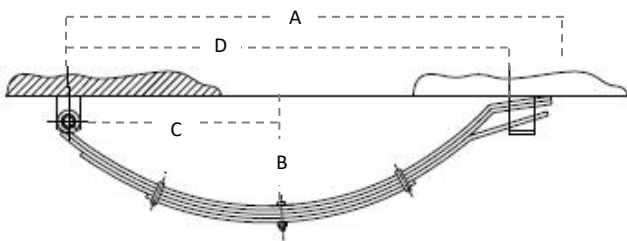
PART NO.	DESCRIPTION	CARRYING CAPACITY	SPRING BUSH DIMENSIONS	A(mm)	B(mm)	C(mm)	D(mm)	E(mm)
SS606S	SET AK. 6L x 60mm x 6mm SLIPPER SPRING *	1300KG	5/8" x 7/8" x 60mm	765	150	330	700	730
SS607S	SET AK. 7L x 60mm x 6mm SLIPPER SPRING *	1400KG						
SS609S	SET AK. 9L x 60mm x 6mm SLIPPER SPRING 🌿	1700KG						

PLEASE NOTE: SET OF SPRINGS INC. SPRINGS, HANGER KIT & 1/2" AXLE FITTINGS

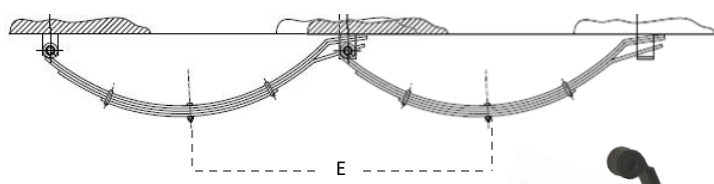
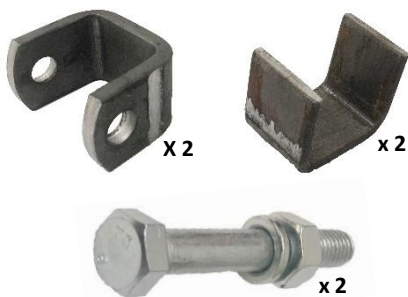
🌿 PLEASE NOTE: SET OF 9L SLIPPER SPRING c/w HANGER KIT & 5/8" AXLE FITTINGS 🌿

60MM x 6MM BLACK SLIPPER SPRING ONLY

PART NO.	DESCRIPTION	CARRYING CAPACITY	SPRING BUSH DIMENSIONS	A(mm)	B(mm)	C(mm)	D(mm)	E(mm)
SS606	AK. 6L x 60mm x 6mm SLIPPER SPRING ONLY	650KG	5/8" x 7/8" x 60mm	765	150	330	700	730
SS607	AK. 7L x 60mm x 6mm SLIPPER SPRING ONLY	700KG						
SS609	AK. 9L x 60mm x 6mm SLIPPER SPRING ONLY	850KG						



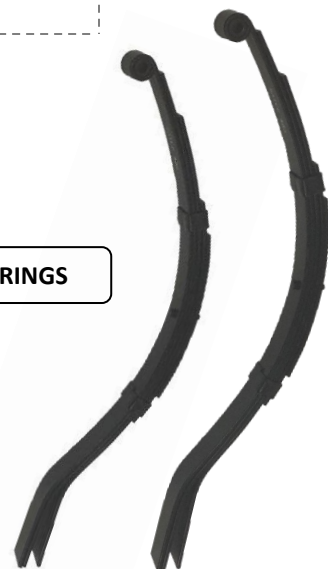
HANGER KIT



1/2" AXLE FITTINGS



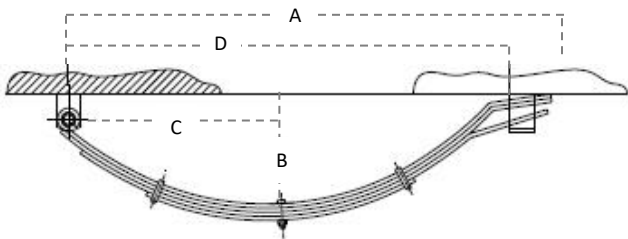
SPRINGS



45MM BLACK SLIPPER SPRING SETS

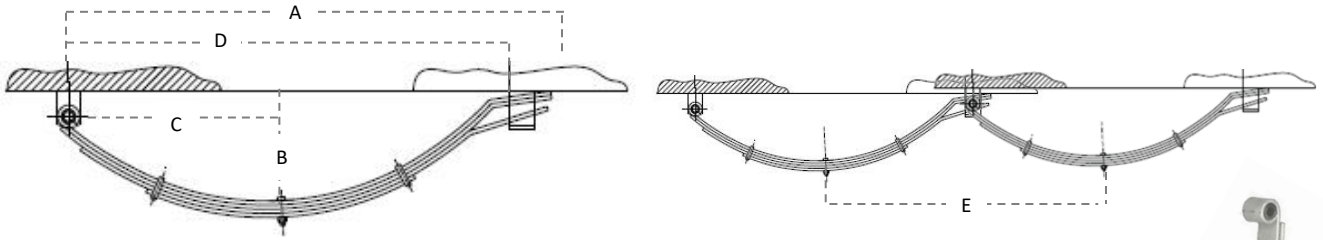
PART NO.	DESCRIPTION	SPRING BUSH DIMENSIONS	CARRYING CAPACITY	A(mm)	B(mm)	C(mm)	D(mm)	E(mm)
SASS453S	SET SAT 3L x 45mm SLIPPER SPRING	7/8" x 1/2" x 45mm	500KG	765	155	330	700	725
SASS454S	SET SAT 4L x 45mm SLIPPER SPRING		700KG					
SASS455S	SET SAT 5L x 45mm SLIPPER SPRING		1000KG					
SASS456S	SET SAT 6L x 45mm SLIPPER SPRING		1120KG					
SASS457S	SET SAT 7L x 45mm SLIPPER SPRING		1270KG					
SASS458S	SET SAT 8L x 45mm SLIPPER SPRING		1375KG					
SASS459S	SET SAT 9L x 45mm SLIPPER SPRING		1500KG					

PLEASE NOTE: SET OF SPRINGS INC. SPRINGS, HANGER KIT & 1/2" AXLE FITTINGS



45MM BLACK SLIPPER SPRING ONLY

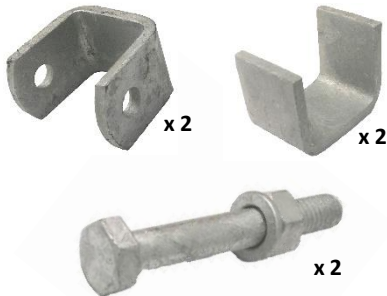
PART NO.	DESCRIPTION	SPRING BUSH DIMENSIONS	CARRYING CAPACITY	A(mm)	B(mm)	C(mm)	D(mm)
SASS453	SET SAT 3L x 45mm SLIPPER SPRING ONLY	7/8" x 1/2" x 45mm	250KG	765	155	330	700
SASS454	SET SAT 4L x 45mm SLIPPER SPRING		350KG				
SASS455	SET SAT 5L x 45mm SLIPPER SPRING ONLY		500KG				
SASS456	SET SAT 6L x 45mm SLIPPER SPRING ONLY		560KG				
SASS457	SET SAT 7L x 45mm SLIPPER SPRING ONLY		635KG				
SASS458	SET SAT 8L x 45mm SLIPPER SPRING ONLY		688KG				
SASS459	SET SAT 9L x 45mm SLIPPER SPRING ONLY		750KG				



GALV HANGER KIT

GALV 1/2" AXLE FITTINGS

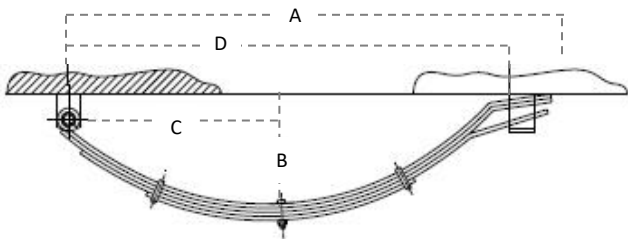
SPRINGS



45MM DACROMET SLIPPER SPRING SETS

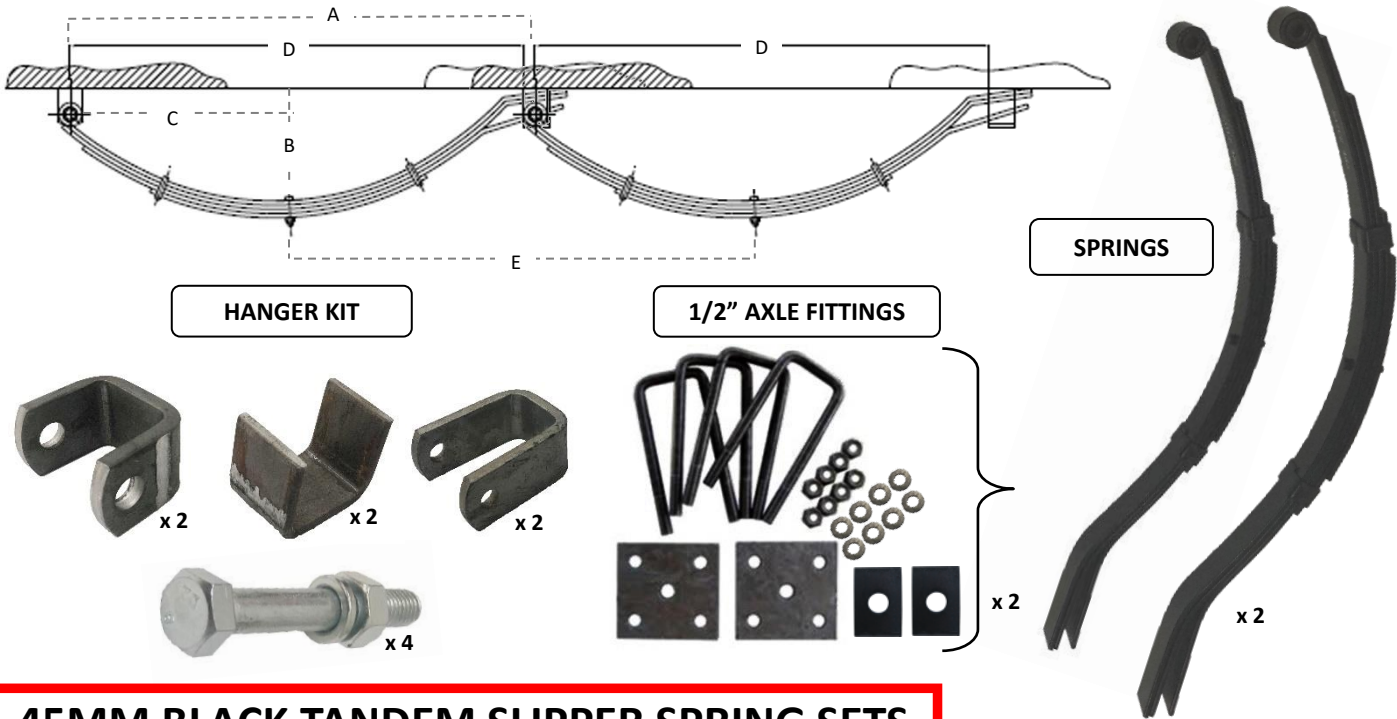
PART NO.	DESCRIPTION	SPRING BUSH DIMENSIONS	CARRYING CAPACITY	A(mm)	B(mm)	C(mm)	D(mm)	E(mm)
SASS453SG	SET SAT 3L x 45mm DAC SLIPPER SPRING	7/8" x 1/2" x 45mm	500KG	765	155	330	700	725
SASS454SG	SET SAT 4L x 45mm DAC SLIPPER SPRING		700KG					
SASS455SG	SET SAT 5L x 45mm DAC SLIPPER SPRING		1000KG					
SASS456SG	SET SAT 6L x 45mm DAC SLIPPER SPRING		1120KG					
SASS457SG	SET SAT 7L x 45mm DAC SLIPPER SPRING		1270KG					
SASS459SG	SET SAT 9L x 45mm DAC SLIPPER SPRING		1500KG					

PLEASE NOTE: SET OF SPRINGS INC. SPRINGS, GALV HANGER KIT & GALV 1/2" AXLE FITTINGS



45MM DACROMET SLIPPER SPRING ONLY

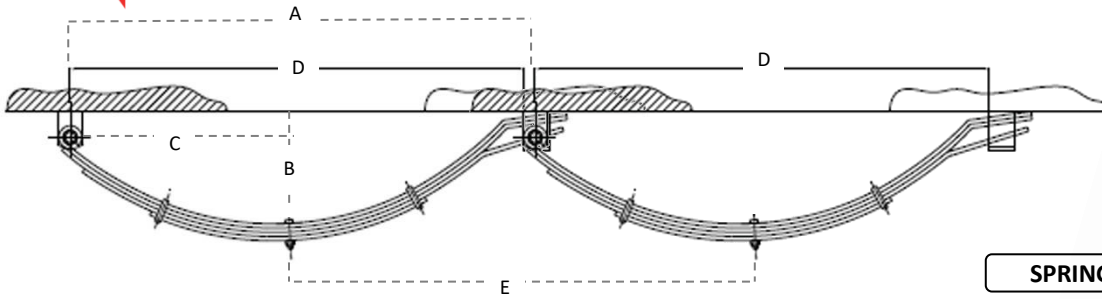
PART NO.	DESCRIPTION	SPRING BUSH DIMENSIONS	CARRYING CAPACITY	A(mm)	B(mm)	C(mm)	D(mm)
SASS453G	SET SAT 3L x 45mm DAC SLIPPER SPRING ONLY	7/8" x 1/2" x 45mm	500KG	765	155	330	700
SASS454G	SET SAT 4L x 45mm DAC SLIPPER SPRING ONLY		700KG				
SASS455G	SET SAT 5L x 45mm DAC SLIPPER SPRING ONLY		1000KG				
SASS456G	SET SAT 6L x 45mm DAC SLIPPER SPRING ONLY		1120KG				
SASS457G	SET SAT 7L x 45mm DAC SLIPPER SPRING ONLY		1270KG				
SASS459G	SET SAT 9L x 45mm DAC SLIPPER SPRING ONLY		1500KG				



45MM BLACK TANDEM SLIPPER SPRING SETS

PART NO.	DESCRIPTION	SPRING BUSH DIMENSIONS	CARRYING CAPACITY	A(mm)	B(mm)	C(mm)	D(mm)	E(mm)
SASST453S	SET SAT 3L x 45mm TANDEM SLIPPER SPRING	7/8" x 1/2" x 45mm	1000KG	765	155	330	700	707
SASST454S	SET SAT 4L x 45mm TANDEM SLIPPER SPRING		1400KG					
SASST455S	SET SAT 5L x 45mm TANDEM SLIPPER SPRING		2000KG					
SASST456S	SET SAT 6L x 45mm TANDEM SLIPPER SPRING		2240KG					
SASST457S	SET SAT 7L x 45mm TANDEM SLIPPER SPRING		2540KG					
SASST458S	SET SAT 8L x 45mm TANDEM SLIPPER SPRING		2750KG					
SASST459S	SET SAT 9L x 45mm TANDEM SLIPPER SPRING		3000KG					

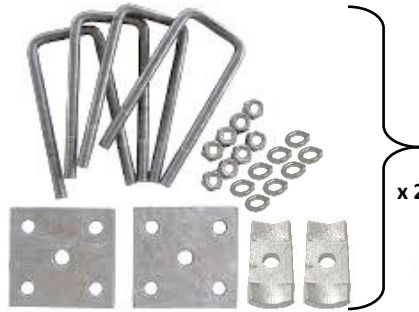
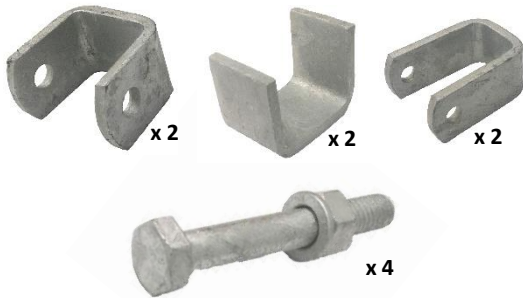
PLEASE NOTE: SET OF SPRINGS INC. SPRINGS, HANGER KIT & 1/2" AXLE FITTINGS



GALV HANGER KIT

GALV 1/2" AXLE FITTINGS

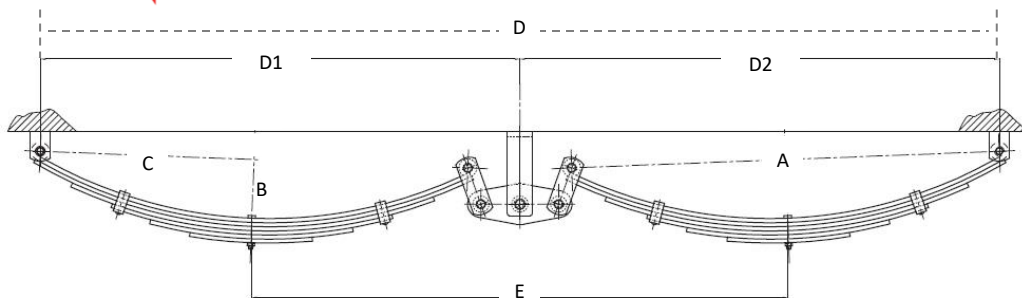
SPRINGS



45MM DACROMET TANDEM SLIPPER SPRING SETS

PART NO.	DESCRIPTION	SPRING BUSH DIMENSIONS	CARRYING CAPACITY	A(mm)	B(mm)	C(mm)	D(mm)	E(mm)
SASST453SG	SET SAT 3L x 45mm DAC TANDEM SLIPPER SPRING	7/8" x 1/2" x 45mm	1000KG	765	155	330	700	707
SASST454SG	SET SAT 4L x 45mm DAC TANDEM SLIPPER SPRING		1400KG					
SASST455SG	SET SAT 5L x 45mm DAC TANDEM SLIPPER SPRING		2000KG					
SASST456SG	SET SAT 6L x 45mm DAC TANDEM SLIPPER SPRING		2240KG					
SASST457SG	SET SAT 7L x 45mm DAC TANDEM SLIPPER SPRING		2540KG					
SASST459SG	SET SAT 9L x 45mm DAC TANDEM SLIPPER SPRING		3000KG					

PLEASE NOTE: SET OF SPRINGS INC. SPRINGS, GALV HANGER KIT & GALV 1/2" AXLE FITTINGS



HANGER KIT

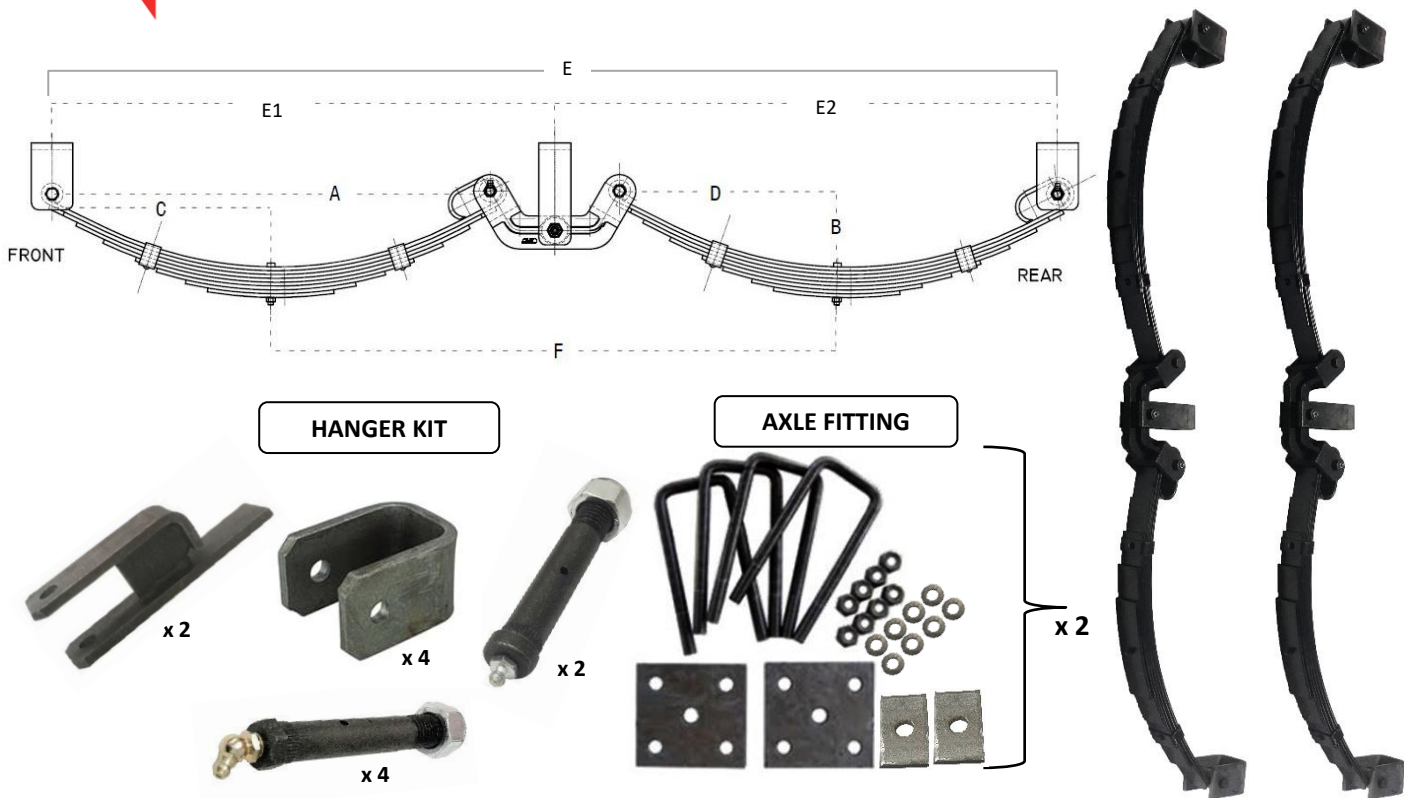
1/2" AXLE FITTING



60MM x 6MM BLACK TANDEM ROCKER SPRING SETS

PART NO.	DESCRIPTION	CARRYING CAPACITY	A(mm)	B(mm)	C(mm)	D(mm)	D1=D2 (mm)	E(mm)
SR605-14S	SET AK. 5L x 60mm x 6mm TANDEM ROCKER SPRING	2000KG	700	120	386	1650	825	893
SR606-14S	SET AK. 6L x 60mm x 6mm TANDEM ROCKER SPRING	3000KG						
SR607-14S	SET AK. 7L x 60mm x 6mm TANDEM ROCKER SPRING	3400KG						

PLEASE NOTE: SET OF SPRINGS INC. SPRINGS, HANGER KIT & 1/2" AXLE FITTINGS

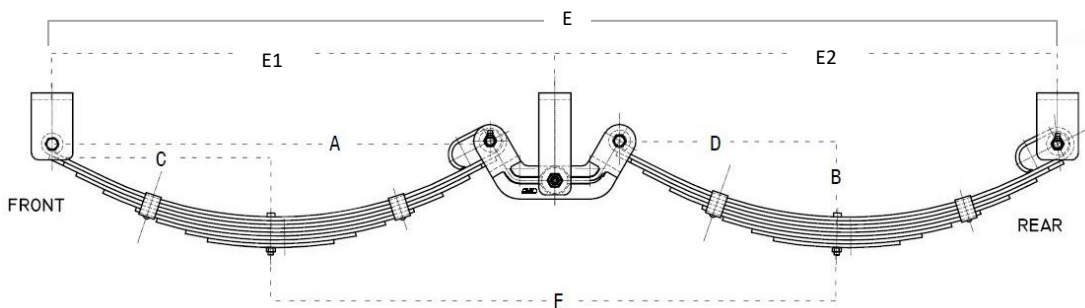


60MM x 6MM BLACK TANDEM ROCKER ROLLER SPRING SETS

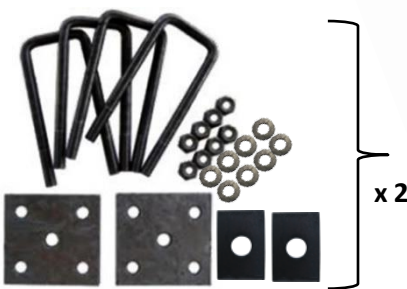
PART NO.	DESCRIPTION	CARRYING CAPACITY	A(mm)	B(mm)	C(mm)	D(mm)	E(mm)	E1=E2 (mm)	F(mm)	
SRR605-14S	SET AK. 5L x 60mm x 6mm TANDEM ROCKER ROLLER SPRING*	1900-2200KG	687	117	396	291	1574	787	785	
SRR606-14S	SET AK. 6L x 60mm x 6mm TANDEM ROCKER ROLLER SPRING*	2210-2500KG								
SRR607-14S	SET AK. 7L x 60mm x 6mm TANDEM ROCKER ROLLER SPRING*	2600-3000KG								
SRR606-16S	SET AK. 6L x 60mm x 6mm TANDEM ROCKER ROLLER SPRING*	2900-3200KG			343	343				888
SRR607-16S	SET AK. 7L x 60mm x 6mm TANDEM ROCKER ROLLER SPRING*	3250-4200KG								
SRR608-16S	SET AK. 8L x 60mm x 6mm TANDEM ROCKER ROLLER SPRING*	3800-4490KG								

PLEASE NOTE: SET OF SPRINGS INC. SPRINGS, HANGER KIT & 1/2" AXLE FITTINGS

PLEASE NOTE: SET OF 8L TDM R/ROLLER SPRINGS c/w HANGER KIT & 5/8" AXLE FITTINGS



AXLE FITTING



**60MM x 6MM & 7MM
TANDEM ROCKER ROLLER
SPRING SETS**

PART NO.	DESCRIPTION	CARRYING CAPACITY	A(mm)	B(mm)	C(mm)	D(mm)	E(mm)	E1=E2 (mm)	F(mm)
SASRR605-14S	SET SAT 5L x 60mm x 6mm TANDEM ROCKER ROLLER SPRING (14") *	2000KG	695	102	395	290	1584	795	795
SASRR606-14S	SET SAT 6L x 60mm x 6mm TANDEM ROCKER ROLLER SPRING (14") *	2500KG							
SASRR607-14S	SET SAT 7L x 60mm x 6mm TANDEM ROCKER ROLLER SPRING (14") *	3000KG							
SASRR608-14S	SET SAT 8L x 60mm x 6mm TANDEM ROCKER ROLLER SPRING (14") *	4000KG							
SASRR606-16S	SET SAT 6L x 60mm x 7mm TANDEM ROCKER ROLLER SPRING (16") *	2500KG	690	102	345	360	1584	795	920
SASRR607-16S	SET SAT 7L x 60mm x 7mm TANDEM ROCKER ROLLER SPRING (16") *	3000KG							
SASRR608-16S	SET SAT 8L x 60mm x 7mm TANDEM ROCKER ROLLER SPRING (16") *	4000KG							
SASRR609-16S	SET SAT 9L x 60mm x 7mm TANDEM ROCKER ROLLER SPRING (16") *	4500KG							

PLEASE NOTE: SET OF SPRINGS INC. SPRINGS c/w HANGER & 1/2" AXLE FITTINGS

PLEASE NOTE: SET OF 8L & 9L (16") TDM R/ROLLER SPRINGS c/w HANGER & 5/8" AXLE FITTINGS 17

AK HANGERS



590630

FRONT HANGER TO
SUIT 60MM OUTBACK
SPRING



590631

REAR HANGER TO
SUIT 60MM OUTBACK
SPRING



576302

FRONT HANGER & REAR
HANGER TO SUIT 60MM
T/R/R SPRING
(SUIT 16MM DRY PIN)



590703

AK CENTRE ROCKER POST
ONLY SUIT 18MM PIN &
T/R SPRING



576305

AK CENTRE ROLLER ROCKER
POST ONLY SUIT 18MM PIN
& T/R/R SPRING

AK ARM



590705

AK ROCKER ARM ONLY
SUIT 60MM SPRING &
18MM PIN



576303

AK ROLLER ROCKER ARM
ONLY SUIT 60MM SPRING
& 18MM PIN

AK PIN



(ROUND HEAD)

590711/12

AK 18MM x 100MM GREASER
PIN c/w NYLOC NUT TO SUIT
T/R SPRING



590707/8

AK M16MM x 100MM DRY
SHACKLE PIN & NYLOC NUT
TO SUIT T/R SPRING



(HEX HEAD)

576306/12

AK M18MM x 97MM CENTER
GREASER PIN c/w NYLOC NUT TO
SUIT T/R/R SPRING

(HEX HEAD & 45-DEGREE NIPPLE)



576304/590708

AK M16 GREASER PIN &
NYLOC NUT TO SUIT T/R/R
SPRING

(STRAIGHT NIPPLE)



590632/708

AK M16 x 100MM GREASER
PIN c/w NYLOC NUT TO
SUIT OUTBACK SPRING

AK BUSHES



590633

STEEL BUSH TO SUIT
60MM OUTBACK
SPRING



576301

ROCKER ROLLER
BUSH



590003

16MM x 22MM x
60MM NYLON BUSH
TO SUIT T/R & T/R/R
SPRING

AK FISHPLATE, SHACKLE PLATE & AXLE PAD



590713

SHACKLE PLATE ONLY SUIT
TO 60MM OUTBACK T/R
SPRING & 16MM PIN



590516

FLAT AXLE PAD 8MM
& 10MM



590420

SLOTTED FISHPLATE
60MM x 45 & 50MM

AK U-BOLTS, NUT & WASHER



592506

5/8" U-BOLT c/w NW SUIT 50
SQUARE (170MM LONG)



592455

5/8" U-BOLT c/w NW SUIT 45
SQUARE (160MM LONG)

AK SET OF U-BOLTS c/w NW, AXLE PAD & FISHPLATES



x2

597120

SET OF 5/8" U-BOLT c/w NW AXLE
PAD & FISHPLATE SUIT 50 SQUARE



x2

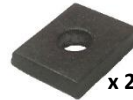
x2



x2

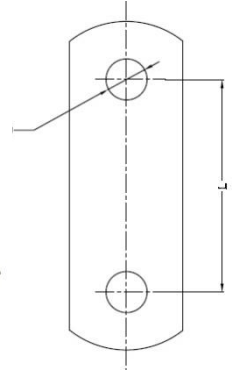
597115

SET OF 5/8" U-BOLT c/w NW AXLE
PAD & FISHPLATE SUIT 45 SQUARE



x2

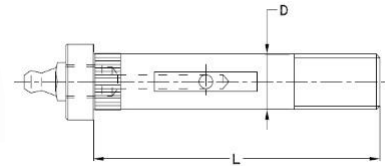
x2



SHACKLE PLATES

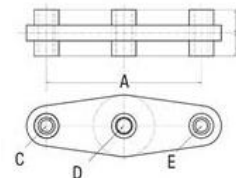
PART NO.	DESCRIPTION	SURFACE FINISH	D	L(MM)
SP12	SHACKLE PLATE	BLACK	1/2"	65MM
SP58	SHACKLE PLATE	BLACK	5/8"	66MM
SP916	SHACKLE PLATE	BLACK	9/16"	66MM

SHACKLE PIN c/w NYLON NUT



PART NO.	DESCRIPTION	SURFACE FINISH	D	L
SP58334	SHACKLE PIN & NYLON NUT	BLACK	5/8"	3.3/4"
701160	SHACKLE PIN & NYLON NUT	BLACK	5/8"	4"
SP9163	SHACKLE PIN & NYLON NUT	BLACK	9/16"	3"
701150	SHACKLE PIN & NYLON NUT	BLACK	9/16"	3.1/2"

ROCKER ARM



PART NO.	DESCRIPTION	SURFACE FINISH	A	C	D	E
XAR50	ROCKER ARM	BLACK	155MM	23MM	17MM	23MM

REAR HANGERS



RH45P

REAR SPRING
 HANGER
 (45MM PARABOLIC)



RH45PG

REAR SPRING
 HANGER GALV
 (45MM PARABOLIC)



SAT9060

REAR SPRING
 HANGER STD.
 EYE & EYE
 (45MM X 9/16")



RH45

REAR SPRING
 HANGER STD
 (45MM SLIPPER)



RH45G

REAR SPRING
 HANGER STD GALV
 (45MM SLIPPER)

LONG CENTRE HANGERS



LCH

LONG CENTRE
 HANGER [1/2"]



LCHG

GALV. LONG CENTRE
 HANGER [1/2"]

FRONT HANGERS



FH4512

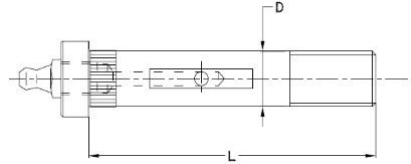
FRONT SPRING
 HANGER STD
 [1/2" X 45MM]



FH4512G

FRONT SPRING
 HANGER GALV STD
 [1/2" X 45MM]

GREASER PIN c/w NYLON NUT

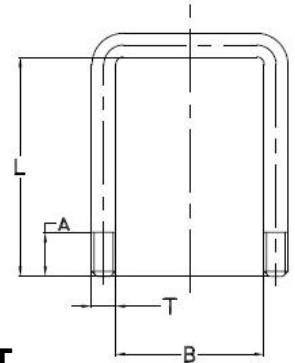


PART NO.	DESCRIPTION	SURFACE FINISH	D	L
GP34312	GREASER PIN & NYLON NUT	BLACK	3/4"	3.1/2
GP34334	GREASER PIN & NYLON NUT	BLACK	3/4"	3.3/4"
GP344	GREASER PIN & NYLON NUT	BLACK	3/4"	4"
GP34412	GREASER PIN & NYLON NUT	BLACK	3/4"	4.1/2"
701142	GREASER PIN & NYLON NUT	BLACK	5/8"	3.1/2"
701162	GREASER PIN & NYLON NUT	BLACK	5/8"	4"
GP58314	GREASER PIN & NYLON NUT	BLACK	5/8"	3.1/4"
GP58412	GREASER PIN & NYLON NUT	BLACK	5/8"	4.1/2"
701140	GREASER PIN & NYLON NUT	BLACK	9/16"	3.1/2"
GP916314	GREASER PIN & NYLON NUT	BLACK	9/16"	3.1/4"
GP916334	GREASER PIN & NYLON NUT	BLACK	9/16"	3.3/4"
GP9164	GREASER PIN & NYLON NUT	BLACK	9/16"	4"

GREASE NIPPLE



PART NO.	DESCRIPTION
H29	GREASE NIPPLE

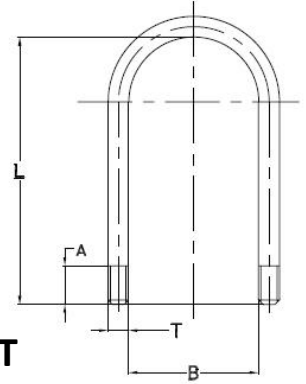


SQUARE U-BOLT

SQUARE BLACK U-BOLT c/w NUTS & WASHERS

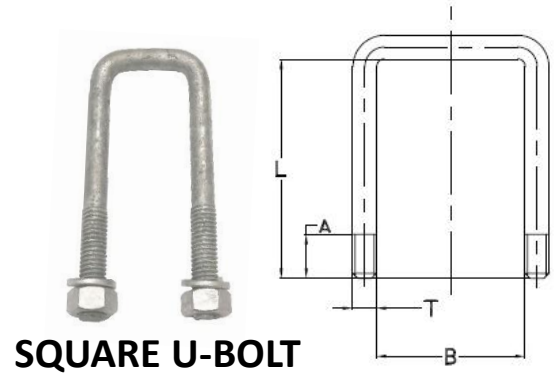
PART NO.	AXLE SECTION "B"	U BOLT LENGTH "L"	NORMAL THREAD LENGTH "A"	THREAD TYPE "T"	FINISH
UB4035SQ	40MM	3.1/2"/89MM	50MM	1/2" BSW	BLACK
UB4045SQ	40MM	4.1/2"/115MM	50MM	1/2" BSW	BLACK
UB405SQ	40MM	5"/127MM	50MM	1/2" BSW	BLACK
UB4055SQ	40MM	5.1/2"/140MM	50MM	1/2" BSW	BLACK
UB4535SQ	45MM	3.1/2"/89MM	50MM	1/2" BSW	BLACK
UB4545SQ	45MM	4.1/2"/115MM	50MM	1/2" BSW	BLACK
UB455SQ	45MM	5"/127MM	50MM	1/2" BSW	BLACK
UB4555SQ	45MM	5.1/2"/140MM	50MM	1/2" BSW	BLACK
UB456SQ	45MM	6"/153MM	50MM	1/2" BSW	BLACK
UB5045SQ	50MM	4.1/2"/115MM	50MM	1/2" BSW	BLACK
UB505SQ	50MM	5"/127MM	50MM	1/2" BSW	BLACK
UB5055SQ	50MM	5.1/2"/140MM	50MM	1/2" BSW	BLACK
UB506SQ	50MM	6"/165MM	50MM	1/2" BSW	BLACK
UB5065SQ	50MM	6.1/2"/153MM	50MM	1/2" BSW	BLACK

**ROUND BLACK U-BOLT c/w
NUTS & WASHERS**



ROUND U-BOLT

PART NO.	AXLE SECTION "B"	U BOLT LENGTH "L"	NORMAL THREAD LENGTH "A"	THREAD TYPE "T"	FINISH
UB3935RD	39MM	3.1/2"/89MM	50MM	1/2" BSW	BLACK
UB394RD	39MM	4"/115MM	50MM	1/2" BSW	BLACK
UB3945RD	39MM	4.1/2"/102MM	50MM	1/2" BSW	BLACK
UB395RD	39MM	5"/127MM	50MM	1/2" BSW	BLACK
UB3955RD	39MM	5.1/2"/140MM	50MM	1/2" BSW	BLACK
UB5045RD	50MM	4.1/2"/115MM	50MM	1/2" BSW	BLACK
UB505RD	50MM	5"/127MM	50MM	1/2" BSW	BLACK
UB5055RD	50MM	5.1/2"/140MM	50MM	1/2" BSW	BLACK
UB506RD	50MM	6"/153MM	50MM	1/2" BSW	BLACK

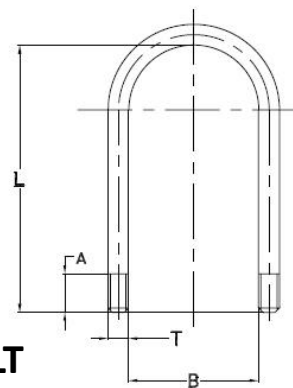


**SQUARE GALVANISED
U-BOLT c/w NUTS & WASHERS**

SQUARE U-BOLT

PART NO.	AXLE SECTION "B"	U BOLT LENGTH "L"	NORMAL THREAD LENGTH "A"	THREAD TYPE "T"	FINISH
UBG4035SQ	40MM	3.1/2"/89MM	50MM	1/2" BSW	GALVANISED
UBG4045SQ	40MM	4.1/2"/115MM	50MM	1/2" BSW	GALVANISED
UBG405SQ	40MM	5"/127MM	50MM	1/2" BSW	GALVANISED
UBG4055SQ	40MM	5.1/2"/140MM	50MM	1/2" BSW	GALVANISED
UBG4535SQ	45MM	3.1/2"/89MM	50MM	1/2" BSW	GALVANISED
UBG4545SQ	45MM	4.1/2"/115MM	50MM	1/2" BSW	GALVANISED
UBG455SQ	45MM	5"/127MM	50MM	1/2" BSW	GALVANISED
UBG4555SQ	45MM	5.1/2"/140MM	50MM	1/2" BSW	GALVANISED
UBG5035SQ	50MM	3.1/2"/89MM	50MM	1/2" BSW	GALVANISED
UBG5045SQ	50MM	4.1/2"/115MM	50MM	1/2" BSW	GALVANISED
UBG505SQ	50MM	5"/127MM	50MM	1/2" BSW	GALVANISED
UBG5055SQ	50MM	5.1/2"/140MM	50MM	1/2" BSW	GALVANISED
UBG506SQ	50MM	6"/153MM	50MM	1/2" BSW	GALVANISED

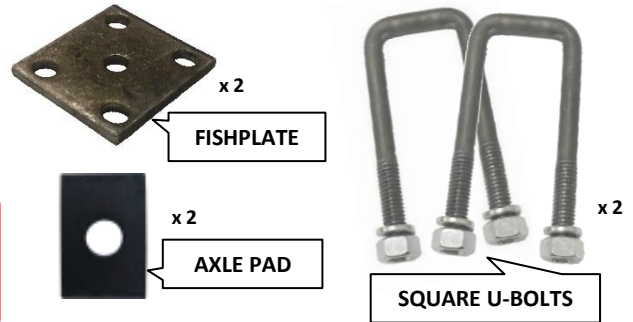
**ROUND GALVANISED
U-BOLT c/w NUTS & WASHERS**



ROUND U-BOLT

PART NO.	AXLE SECTION "B"	U BOLT LENGTH "L"	NORMAL THREAD LENGTH "A"	THREAD TYPE "T"	FINISH
UBG3935RD	39MM	3.1/2"/89MM	50MM	1/2" BSW	GALVANISED
UBG3945RD	39MM	4.1/2"/115MM	50MM	1/2" BSW	GALVANISED
UBG395RD	39MM	5"/127MM	50MM	1/2" BSW	GALVANISED
UBG3955RD	39MM	5.1/2"/140MM	50MM	1/2" BSW	GALVANISED
UBG4535RD	45MM	3.1/2"/89MM	50MM	1/2" BSW	GALVANISED
UBG4545RD	45MM	4.1/2"/115MM	50MM	1/2" BSW	GALVANISED
UBG455RD	45MM	5"/127MM	50MM	1/2" BSW	GALVANISED
UBG4555RD	45MM	5.1/2"/140MM	50MM	1/2" BSW	GALVANISED
UBG5045RD	50MM	4.1/2"/115MM	50MM	1/2" BSW	GALVANISED

**SET OF SQUARE BLACK U-BOLT
c/w NUTS, WASHERS,
FISHPLATES & AXLE PADS**



PART NO.

DESCRIPTION

UB40SS

SET 40MM SQ U-BOLTS c/w NUTS, WASHERS, FISHPLATES & AXLE PADS

UBS40S60

SET STD 40MM SQ U-BOLTS c/w NUTS, WASHERS, FISHPLATES & AXLE PADS (60MM FISHPLATES)

UB45SS

SET 45MM SQ U-BOLTS c/w NUTS, WASHERS, FISHPLATES & AXLE PADS

UBS45S58

SET 45MM SQ x 5/8" U-BOLTS c/w NUTS, WASHERS, FISHPLATES & AXLE PADS (H/D FISHPLATES)

UBS45S60

SET STD 45MM SQ U-BOLTS c/w NUTS, WASHERS, FISHPLATES & AXLE PADS (60mm FISHPLATES)

UBS50S58

SET 50MM SQ x 5/8" U-BOLTS c/w NUTS, WASHERS, FISHPLATES & AXLE PADS (H/D FISHPLATES)

UBS50S60

SET STD 50MM SQ U-BOLTS c/w NUTS, WASHERS, FISHPLATES & AXLE PADS (60MM FISHPLATES)

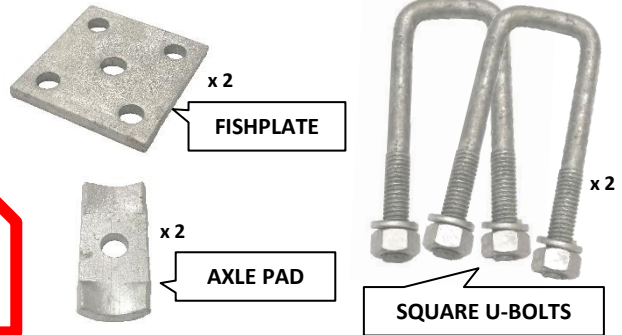
UB50SS

SET 50MM SQ U-BOLTS c/w NUTS, WASHERS, FISHPLATES & AXLE PADS

UBS63S63

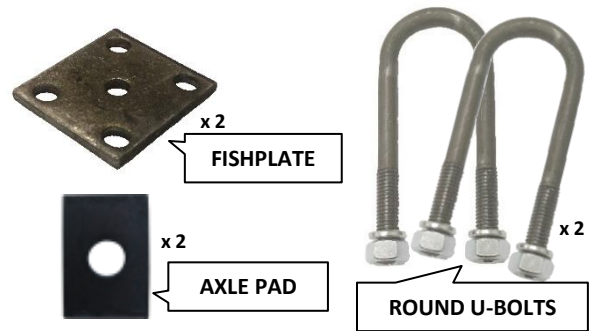
SET 63SQ x 5/8" UBOLT c/w NUTS, WASHERS, FISHPLATES & AXLE PADS (63MM FISHPLATES)

**SET OF SQUARE GALVANISED
U-BOLT c/w NUTS, WASHERS,
FISHPLATES & AXLE PADS**



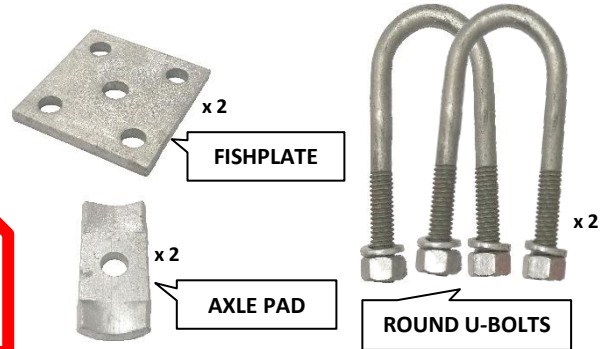
PART NO.	DESCRIPTION
UB40SSG	SET 40MM SQ GALV U-BOLTS c/w NUTS, WASHERS, FISHPLATES & AXLE PADS
UB45SSG	SET 45MM SQ GALV U-BOLTS c/w NUTS, WASHERS, FISHPLATES & AXLE PADS
UB50SSG	SET 50MM SQ GALV U-BOLTS c/w NUTS, WASHERS, FISHPLATES & AXLE PADS
UBS45S60G	SET 45MM SQ GALV STD U-BOLTS c/w NUTS, WASHERS, FISHPLATES & AXLE PADS (60MM FISHPLATES)
UBS50S60G	SET 50MM SQ GALV STD U-BOLTS c/w NUTS, WASHERS, FISHPLATES & AXLE PADS (60MM FISHPLATES)

**SET OF ROUND BLACK U-BOLT
c/w NUTS, WASHERS,
FISHPLATE & AXLE PADS**



PART NO.	DESCRIPTION
UBS39R60	SET STD 39MM RND U-BOLTS c/w NUTS, WASHERS, FISHPLATES & AXLE PADS (60MM FISHPLATES)
UBS45R60	SET STD 45MM RND U-BOLTS c/w NUTS, WASHERS, FISHPLATES & AXLE PADS (60MM FISHPLATES)
UBS50R60	SET STD 50MM RND U-BOLTS c/w NUTS, WASHERS, FISHPLATES & AXLE PADS (60MM FISHPLATES)

**SET OF ROUND GALVANISED
U-BOLT c/w NUTS, WASHERS,
FISHPLATES & AXLE PADS**

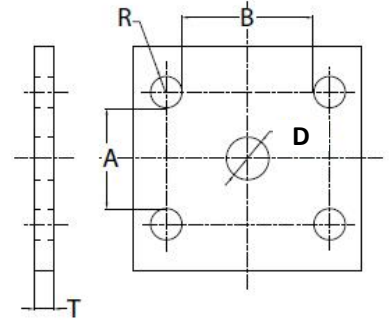


PART NO.	DESCRIPTION
UBS45R60G	SET GALV STD 45MM RND U-BOLTS c/w NUTS, WASHERS, FISHPLATES & AXLE PADS (60MM FISHPLATES)
UBS50R60G	SET GALV STD 50MM RND U-BOLTS c/w NUTS, WASHERS, FISHPLATES & AXLE PADS (60MM FISHPLATES)

FISH PLATES (PUNCHED HOLE)



FISHPLATE



PART NO.	DESCRIPTION	SURFACE FINISH	A(MM)	B(MM)	D(MM)	T(MM)
FP3945	FISH PLATE	BLACK	39	45	16	8
FP3960	FISH PLATE	BLACK	39	60	16	7
FP4560	FISH PLATE	BLACK	45	60	21	8
FP5045	FISH PLATE	BLACK	50	45	17	8
FP5060	FISH PLATE	BLACK	50	60	16	8
FP3945G	FISH PLATE	GALV	39	45	15	7
FP5045G	FISH PLATE	GALV	50	45	19	8

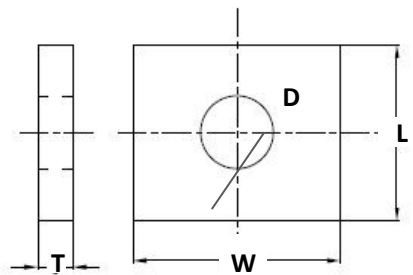
AXLE PADS



AXLE PAD



FLAT AXLE PAD



PART NO.	DESCRIPTION	SURFACE FINISH	W(MM)	L(MM)	D(MM)	T(MM)
AP1	AXLE PAD	BLACK	40	85	16	7
APF	FLAT AXLE PAD	BLACK	45	75	18	8
AP1G	AXLE PAD	GALV	40	85	16	7
APFG	FLAT AXLE PAD	GALV	45	75	18	8



FRONT BOLTS & NUTS c/w WASHERS

PART NO.	DESCRIPTION	FINISH
FBNW	FRONT BOLT c/w NUT WASHER (3.1/2" x 1/2")	ZINC
FBNWG	FRONT BOLT GALV c/w NUT WASHER (3.1/2" x 1/2")	GALV



WHIT BOLTS c/w NUTS

PART NO.	DESCRIPTION	FINISH
BN1.5/12	1.1/2" x 1/2" WHIT BOLT c/w NUT	ZINC
BN4.5/12	4.1/2 x 1/2" WHIT BOLT c/w NUT	ZINC



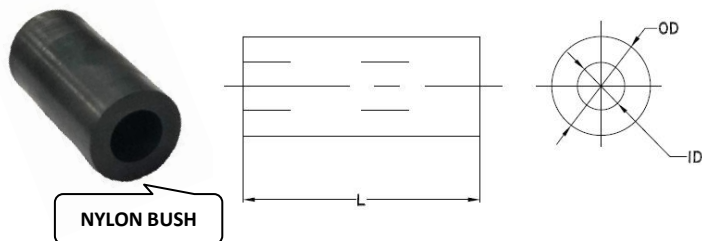
NUTS & SPRING WASHERS

NUT

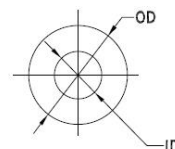
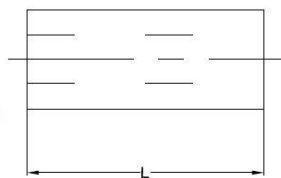
WASHER

PART NO.	DESCRIPTION	FINISH
29	1/2" HEX NUT ONLY	ZINC
SWASS12	1/2" SPRING WASHER	ZINC
SWASS38	3/8" SPRING WASHER	ZINC
SWASS716	7/16" SPRING WASHER	ZINC
29G	1/2" GALV HEX NUT ONLY	GALV
SWASS12G	1/2" GALV SPRING WASHER	GALV
SWASS38G	3/8" GALV SPRING WASHER	GALV
SWASS716G	7/16" GALV SPRING WASHER	GALV

NYLON BUSHES



PART NO.	DESCRIPTION	SURFACE FINISH	OD	ID	L(MM)
NB1	NYLON BUSH	BLACK	3/4"	1/2"	45MM
NB2	NYLON BUSH	BLACK	7/8"	1/2"	45MM
IES1057/2	NYLON BUSH (SUIT R/R)	BLACK	5/8"	1.1/4"	60MM
NB34916	NYLON BUSH	BLACK	9/16"	3/4"	45MM
NB785860	NYLON BUSH	BLACK	7/8"	5/8"	60MM
NB78916	NYLON BUSH	BLACK	9/16"	7/8"	45MM



NYLON BUSHES

NYLON BUSH

STEEL BUSH

PART NO.	DESCRIPTION	SURFACE FINISH	OD	ID	L(MM)
NB1PK2	PACK OF 2 NYLON BUSH	BLACK	3/4"	1/2"	45MM
NB1PK4	PACK OF 4 NYLON BUSH	BLACK	3/4"	1/2"	45MM
NB2PK2	PACK OF 2 NYLON BUSH	BLACK	7/8"	1/2"	45MM
NB2PK4	PACK OF 4 NYLON BUSH	BLACK	7/8"	1/2"	45MM
IES1057/2PK2	PACK OF 2 NYLON BUSH (SUIT R/R)	BLACK	5/8"	1.1/4"	60MM
IES1057/2PK4	PACK OF 4 NYLON BUSH (SUIT R/R)	BLACK	5/8"	1.1/4"	60MM
NB34916PK2	PACK OF 2 NYLON BUSH	BLACK	9/16"	3/4"	45MM
NB34916PK6	PACK OF 6 NYLON BUSH	BLACK	9/16"	3/4"	45MM
NB785860PK2	PACK OF 2 NYLON BUSH	BLACK	7/8"	5/8"	60MM
NB785860PK6	PACK OF 6 NYLON BUSH	BLACK	7/8"	5/8"	60MM
NB78916PK2	PACK OF 2 NYLON BUSH	BLACK	9/16"	7/8"	45MM
NB78916PK6	PACK OF 6 NYLON BUSH	BLACK	9/16"	7/8"	45MM

STEEL BUSHES

PART NO.	DESCRIPTION	SURFACE FINISH	OD	ID	L(MM)
576301PK2	PACK OF 2 STEEL BUSH (SUIT R/R)	BLACK	5/8"	1.1/4"	60MM
576301PK4	PACK OF 4 STEEL BUSH (SUIT R/R)	BLACK	5/8"	1.1/4"	60MM



NYLON BUSHES c/w FRONT BOLT



PART NO.	DESCRIPTION
NBP3412FB/2	PACK OF 2 – 3/4" NYLON BUSHES & 1/2" F/BOLTS
NBP3412FB/4	PACK OF 4 – 3/4" NYLON BUSHES & 1/2" F/BOLTS
NBP7812FB/2	PACK OF 2 – 7/8" NYLON BUSHES & 1/2" F/BOLTS
NBP7812FB/4	PACK OF 4 – 7/8" NYLON BUSHES & 1/2" F/BOLTS

NYLON BUSHES OR STEEL c/w GREASER PINS



PART NO.	DESCRIPTION
NBP58RDP/4	PACK OF 4 - NYLON ROLLER BUSHES & 5/8" DRY PINS
SBP58GP/4	PACK OF 4 – STEEL BUSHES & 5/8" G/PINS
SBP58RGP/4	PACK OF 4 – STEEL ROLLER BUSHES & 5/8" G/PINS

NYLON BUSHES c/w DRY PINS



PART NO.	DESCRIPTION
NBP58RDP/4	PACK OF 4 – NYLON ROLLER BUSHES & 5/8" DRY PINS
NBP7858DP/4	PACK OF 4 – 7/8" NYLON BUSHES & 5/8" DRY PINS