

• **95mm BALL TRAILER COUPLING**



375AX

95mm TRAILER COUPLING

RIGID DRAWBAR: MAX. ATM 7000KG

HINGED DRAWBAR: D-VALUE 70KN



(INCL.: A - 375/11 1" BOLT SET;
B - 375/10 3/4" BOLT SET;
C - 375/1 TRAILER HOOD)



375DX

95mm BALL & TRUCK KIT

RIGID DRAWBAR: MAX. ATM 7000KG

HINGED DRAWBAR: D-VALUE 70KN



B



C



D



E



F

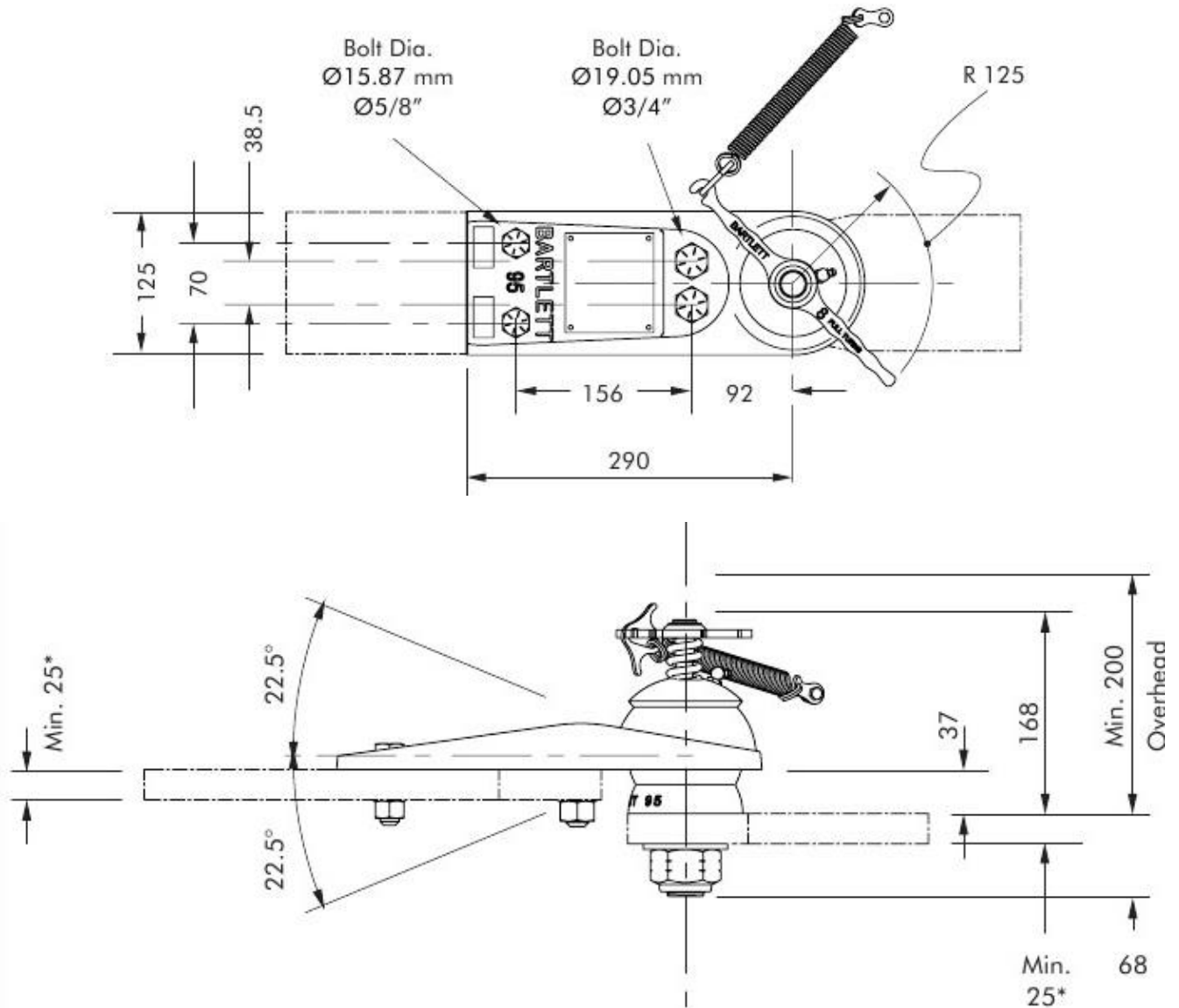


G



(INCL: A - 5-3/9 SAFETY SPRING;
B - 375/6 CLAMPING BOLT;
C - 375/7 COMPRESSION SPRING;
D - 375/3 CAP;
E - 375/4 MAIN BOLT;
F - 375/2 BALL;
G - 5-3/5 NYLOC NUT & WASHER)

• **95mm BALL TRAILER COUPLING**



Do not scale - All measurements in mm

*Mounting lugs not included, shown for illustration purpose only - available at extra cost

*Mounting lugs must be adequately supported as dictated by professional design engineer

*DWG or DXF file available approval

• **127mm BALL TRAILER COUPLING**



59AX
127mm TRAILER COUPLING

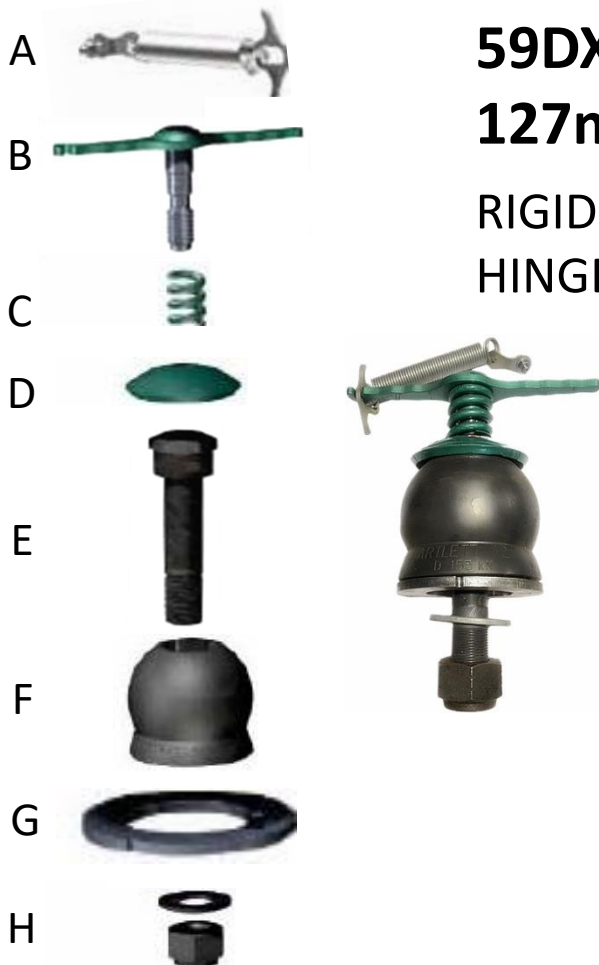
RIGID DRAWBAR: MAX. ATM 24000KG

HINGED DRAWBAR: D-VALUE 155KN

(INCL.: A - 59/11 1" BOLT SET;

B - 59/10 3/4" BOLT SET;

C - 59/1 TRAILER HOOD)



59DX
127mm BALL & TRUCK KIT

RIGID DRAWBAR: MAX. ATM 24000KG

HINGED DRAWBAR: D-VALUE 155KN

(INCL: A - 5-3/9 SAFETY SPRING;

B - 59/6 CLAMPING BOLT;

C - 59/7 COMPRESSION SPRING;

D - 59/3 CAP;

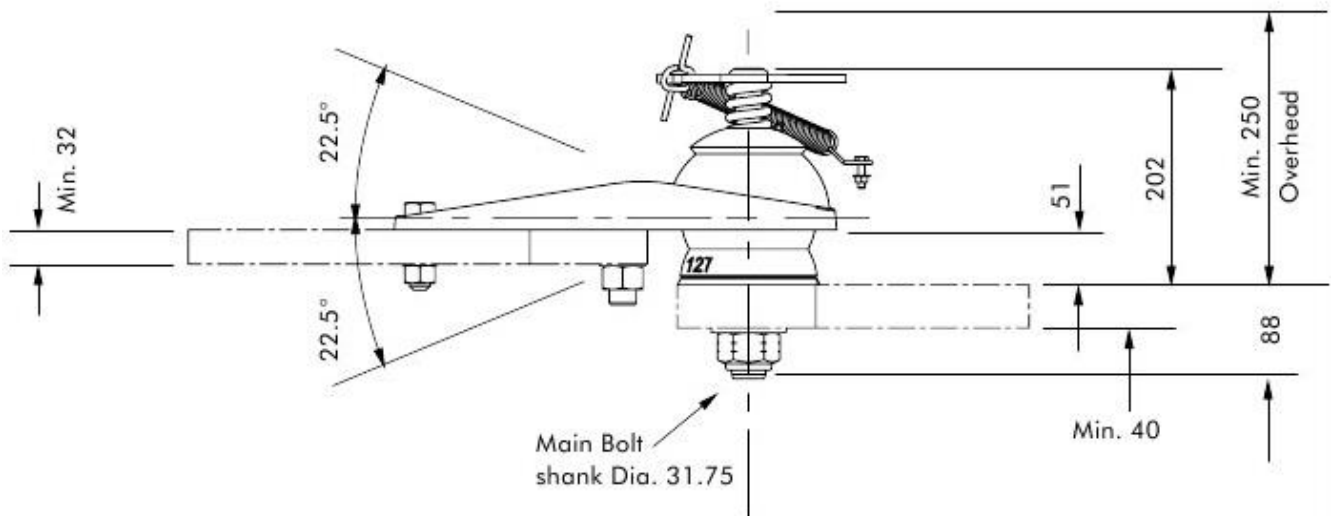
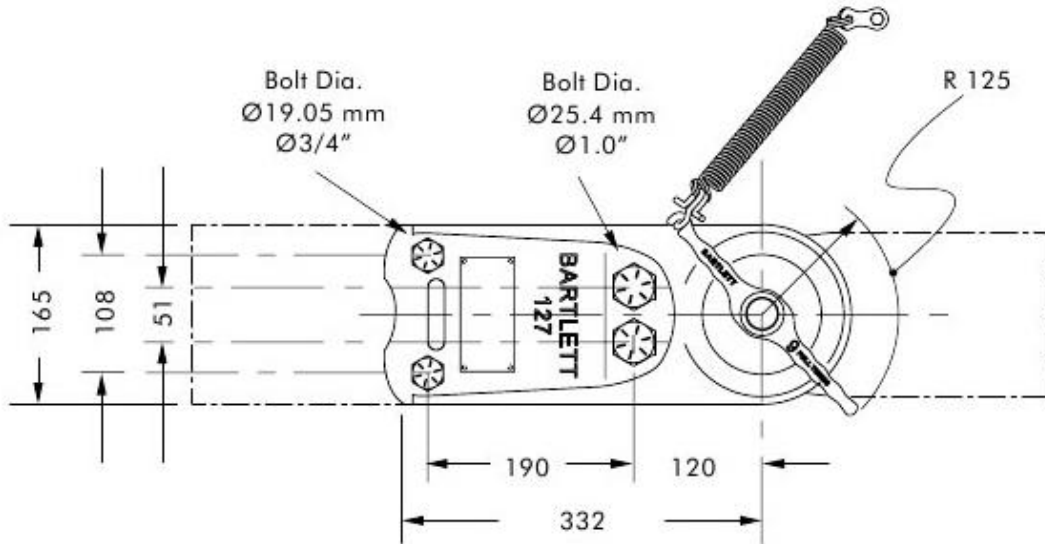
E - 59/4 MAIN BOLT;

F - 59/2 BALL;

G - 59/8 LOCATING RING;

H - 5-3/5 NYLOC NUT & WASHER)

• 127mm BALL TRAILER COUPLING



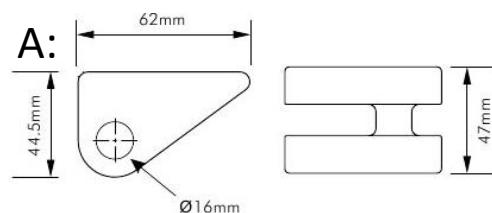
Do not scale - All measurements in mm

*Mounting lugs not included, shown for illustration purpose only - available at extra cost

*Mounting lugs must be adequately supported as dictated by professional design engineer

*DWG or DXF file available approval

• **SAFE-T-CHAIN SYSTEM**



SC62-13R

TOWBAR CHAIN BRACKET SET

CAPACITY: MAX. ATM 13500KG

(INCL.: A - ATTACHMENT - HIGH TENSILE WELDABLE STEEL (2 OFF) (DIMENSIONS SEE ABOVE SCETCHES);

B - DRAWPIN ASSEMBLY - HIGH TENSILE (2 OFF);

C - DRAWPIN KEEPER (2 OFF))

SC62-13F

TRAILER CHAIN BRACKET SET

CAPACITY: MAX. ATM 13500KG

(INCL.: A - ATTACHMENT - HIGH TENSILE WELDABLE STEEL (2 OFF) (DIMENSIONS SEE ABOVE SCETCHES);

B - TRAILER PIN ASSEMBLY - HIGH TENSILE (2 OFF))

TB800/13-20

13mm x 790mm CHAIN SET

(2 LENGTHS)